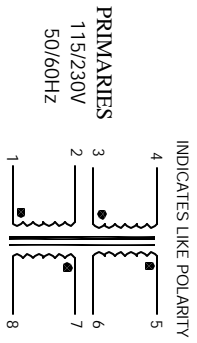


The information contained in this drawing is the sole property of CWS-Specialist. Any reproduction in part or whole without written permission is prohibited.

REVISION HISTORY

REV	ECN	DESCRIPTION	BY	DATE	CHK	DATE
A		PRODUCTION RELEASE	TKK	4/16/08	JLU	4/16/08



5 WHERE SHOWN, USING A PERMANENT MARKING METHOD
MARK PART NUMBER AND REVISION

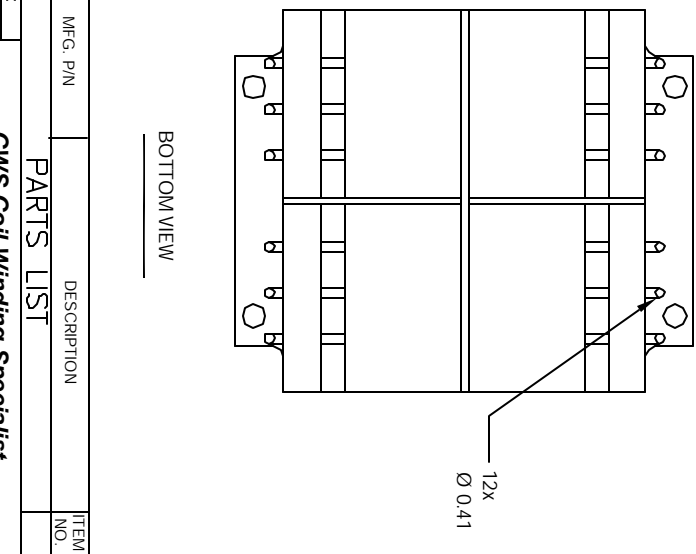
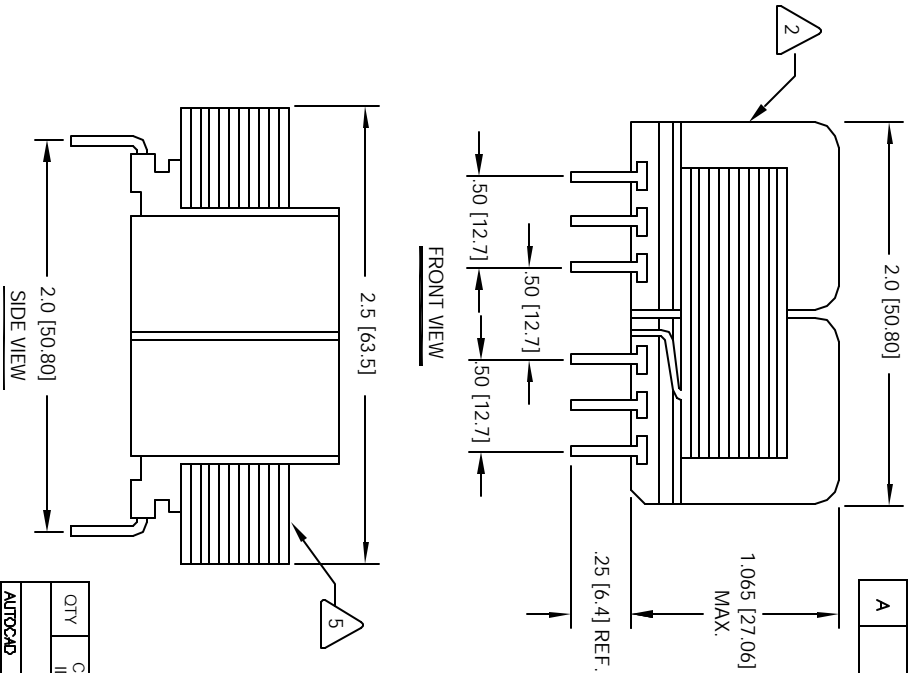
4 CONTACT CWS FOR MORE INFORMATION
BUT NOT CERTIFIED OR TESTED BY THESE AGENCIES
DESIGNED TO MEET UL, CSA, TUV STANDARDS,
CONCENTRIC CONSTRUCTION

3 VOLT-AMPERES RATING = 12 VA
SPECIFICATIONS @ 25°C

2 WIRE: UL RECOGNIZED 130°C RATED MAGNET WIRE
CWS BYTE-MARK OR OTHER APPROVED PART
CORE: 50 Hz / 60 Hz LAMINATION

1 BOBBIN RATING CLASS B (130°C) REQUIRED
MATERIAL: UL RECOGNIZED 94V-0 FOR FLAMMABILITY

NOTES: UNLESS OTHERWISE SPECIFIED,
READ NOTES FROM BOTTOM TO TOP



UNLESS OTHERWISE SPECIFIED

DIMENSIONING AND TOLERANCES PER ANSI Y14.5M	FRAM	DATE
ALL DIMENSIONS ARE IN INCHES AND DIMETERS	TKK	4/15/05
TOLERANCE INCHES: .000<-E, .005<-X, .015<-Z, .030<-D, .070<-F, .127<-S, .200<-L, .127<-J, .300<-E, .300<-F, .300<-G, .300<-H, .300<-K, .300<-M, .300<-N, .300<-P, .300<-R, .300<-T, .300<-V, .300<-W, .300<-Y, .300<-Z	ENDR	4/15/05
ANGLE PREDOMINATION	APPR	4/15/05
DO NOT SCALE DRAWING	JLU	

QTY	CODE	IDENT	MFG. P/N	DESCRIPTION	ITEM NO.
				PARTS LIST	
	AUTOCAD		X		
	SOLIDWORKS				
	SIGN				
	FRAM	DATE		CWS Coil Winding Specialist	
	TKK	4/15/05		1510 E. Edinger Ave. Unit B, Santa Ana, CA 92705	
	ENDR	4/15/05		Power Transformer	
	APPR	4/15/05		EPL Series, 12VA, 1.065" High	
	JLU			EPL-12-20	REV A
			SCALE	Z=1	
				SHEET 1 OF 1	